



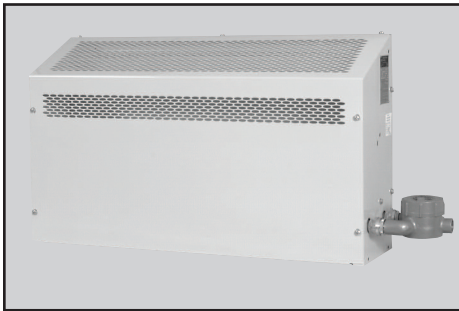
A Marley Engineered Products Brand

# SCG SERIES

## EXPLOSION PROOF CONVECTORS

- EXPLOSION PROOF JUNCTION BOXES
- CORROSIVE RESISTANT POLYESTER POWDER COATED 16 GAUGE STEEL

### SELECTION CHART



#### APPLICATIONS

SCG Series convector heaters are designed to heat areas classified as hazardous locations designated for Class I, Groups B, C, & D. Division 1 and 2 environments. Typical applications involve petroleum refineries and gasoline storage and dispensing areas, industrial firms that use flammable liquids in dip tanks for parts cleaning, petrochemical companies manufacturing chemicals, dry cleaning plants, utility and natural gas plants, aircraft hangars, fueling areas, and many other hazardous areas covered by these classifications.

#### FEATURES

- Easily mounted with integral mounting brackets provided for wall installation.
- Polyester powder coated heavy gauge steel that provides excellent corrosion resistance.
- High quality, long life tubular elements with high grade resistance wire embedded in MGO, centered in heavy gauge 1.25" diameter sheath with 3" x 3.25" fins.
- Explosion proof junction boxes included for conduit entry and ease of wiring.
- Sloped top cabinet prevents objects from being set on top which could restrict airflow. These convection heaters have been designed and manufactured to provide a rugged and corrosion resistant heat source for areas where volatile flammable liquids or gases and vapors are present.

T2A Temperature Rating (536 deg. F)						
Catalog Number	Heater Volts	Watts (KW)	Phase	Amps	BTU	Ship Wt.
SCG18001	120	1.8	1	15.0	6,140	46 lbs
SCG18081	208	1.8	1	8.7	6,140	
SCG18083	208	1.8	3	5.0	6,140	
SCG18041	240	1.8	1	7.5	6,140	
SCG18043	240	1.8	3	4.4	6,140	
SCG18071	277	1.8	1	6.5	6,140	
SCG180481	480	1.8	1	3.8	6,140	
SCG180483	480	1.8	3	2.2	6,140	
SCG36081	208	3.6	1	17.3	2,300	58 lbs
SCG36083	208	3.6	3	10.0	12,300	
SCG36041	240	3.6	1	15.0	2,300	
SCG36043	240	3.6	3	8.7	2,300	
SCG36071	277	3.6	1	13.0	2,300	
SCG360481	480	3.6	1	7.5	12,300	
SCG360483	480	3.6	3	4.3	12,300	
SCG36063	600	3.6	3	6.3	12,300	
SCG76081	208	7.6	1	36.5	25,930	94 lbs
SCG76083	208	7.6	3	21.1	25,930	
SCG76041	240	7.6	1	31.7	25,930	
SCG76043	240	7.6	3	18.3	25,930	
SCG76071	277	7.6	1	27.4	25,930	
SCG760481	480	7.6	1	15.8	25,930	
SCG760483	480	7.6	3	9.2	25,930	
SCG76063	600	7.6	3	9.2	25,930	

T3A Temperature Rating (356 deg. F)						
Catalog Number	Heater Volts	Watts (KW)	Phase	Amps	BTU	Ship Wt.
SCG16081	208	1.6	1	7.7	5500	82 lbs
SCG32081	208	3.2	1	15.4	11,000	84 lbs
SCG32083	208	3.2	3	8.9	11,000	
SCG32041	240	3.2	1	13.3	11,000	
SCG32043	240	3.2	3	7.7	11,000	
SCG32071	277	3.2	1	11.6	11,000	
SCG320481	480	3.2	1	6.7	11,000	
SCG320483	480	3.2	3	3.8	11,000	
SCG32063	480	3.2	3	5.6	11,000	

Optional Built-In Controls
Class C&D Thermostat-50° - 90°F Range
24 Volt Control Circuit & Transformer
120 Volt control circuit, transformer and contactor
Class B, C, & D Thermostat-50° - 90°F Range
Consult factory for other models (9KW available)

